

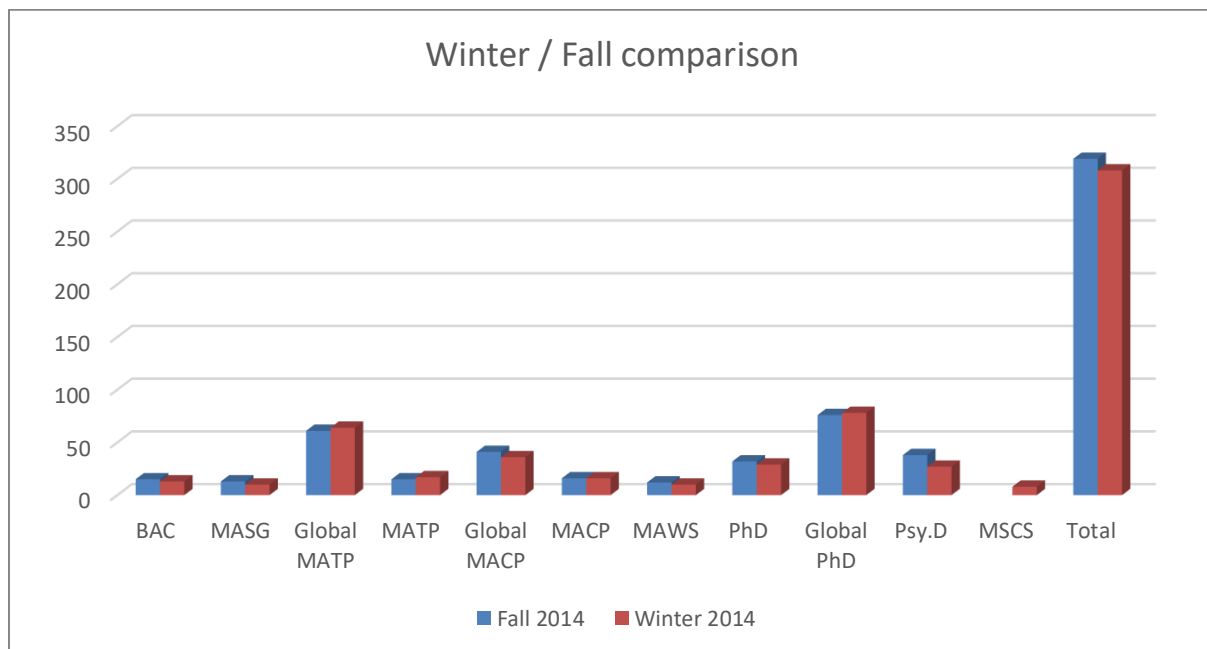
# Office of Institutional Research

Intended as quick snapshot, this research note focuses on the facts and figures documenting enrollment at Sofia University during Winter 2015 quarter.

---

## Overall Enrollment

*Fall 2012 was considered the starting point of 5 years data collections.*



- Total enrollment dropped by 3% from 319 students in Fall 2014 to 308 students in Winter 2015
- 70% of the overall population was women.

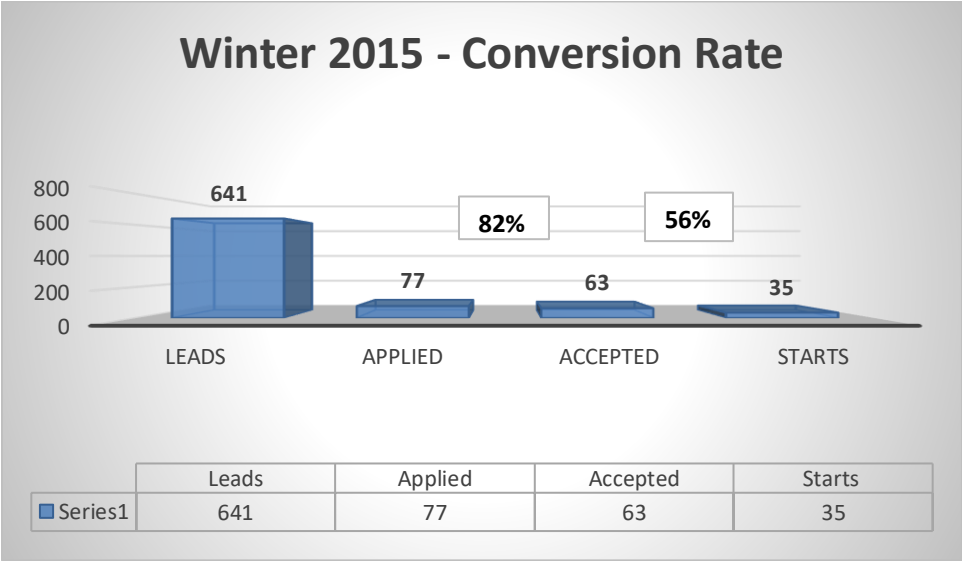
Program	Fall 2014	Winter 2014
BAC	15	13
MASG	13	10
Global MATP	61	64
MATP	15	17
Global MACP	41	36
MACP	16	16
MAWS	12	10
PhD	32	29
Global PhD	76	78
Psy.D	38	27
MSCS		8
Total	319	308

Program	Winter 2014	Male	%	Female	%
BAC	13	3	23%	10	77%
MASG	10	1	10%	9	90%
Global MATP	64	25	39%	39	61%
MATP	17	9	53%	8	47%
Global MACP	36	7	19%	29	81%
MACP	16	5	31%	11	69%
MAWS	10	2	20%	8	80%
PhD	29	7	24%	22	76%
Global PhD	78	18	23%	60	77%
Psy.D	27	13	48%	14	52%
MSCS	8	5	63%	3	38%
Total	306	93	30%	213	70%

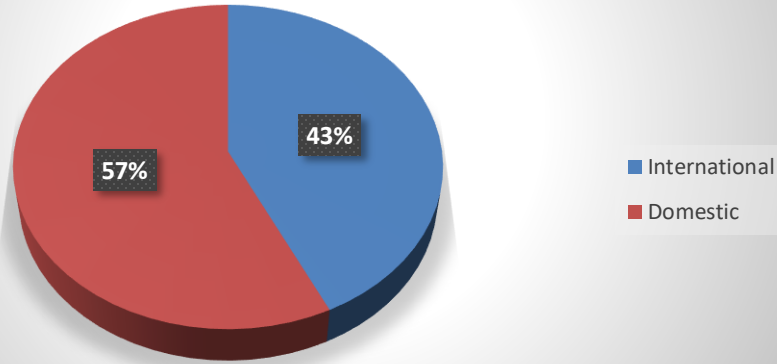
Improving (After Strategic move of moving Admissions office under VP of Strategic Planning) – Conversion rate is at 5%

Winter 2015

Leads	641	
Applied	77	12%
Accepted	63	82%
Starts	35	56%



## Winter 2015 - New Students (International)



Winter 2015		
Total	35	
International	15	43%
Domestic	20	

- ✚ 35 New students were admitted in Winter 2015.
- ✚ 43% of those were international students.

## Winter 2015 - New Students

